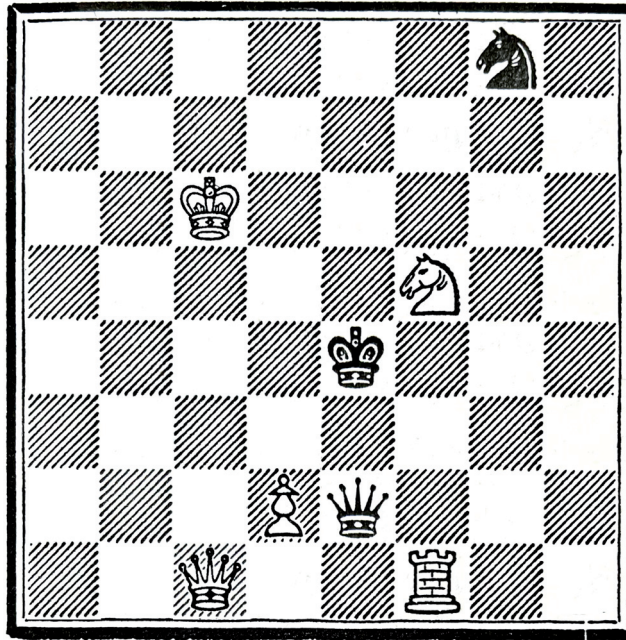


Unplaying CHESS or playing SSEHC

A proposition by **Angela Detanico and Rafael Lain**
Mapping the Irreverse, University of Graz, 2023

black



white

**Play a SSEHC game starting from Lewis Carroll's
Through the Looking Glass chess problem.**



A SSEHC game is a reversion of a CHESS game.

Starting from a checkmate or a chess problem,
play backwards until the initial positions of the pieces on the board are restored.

In CHESS, pieces are taken from the board.

In SSEHC, they are put back in the game.

All pieces in SSEHC move like in CHESS, except for pawns:

A pawn moves straight *backwards* one square, if that square is vacant.

It will move *backwards* diagonally if *liberating* a piece.

Pawns cannot move *forward*.

The first move can be played either by white or black,

depending on the starting point of the game.

The last move is played by white.

